

PART OF THE N.W. 1/4, SEC. 23, T.5N., R.1W., S.L.B. & M.
UINTAH HIGHLANDS SUBDIVISION NO. 6

IN WEBER COUNTY

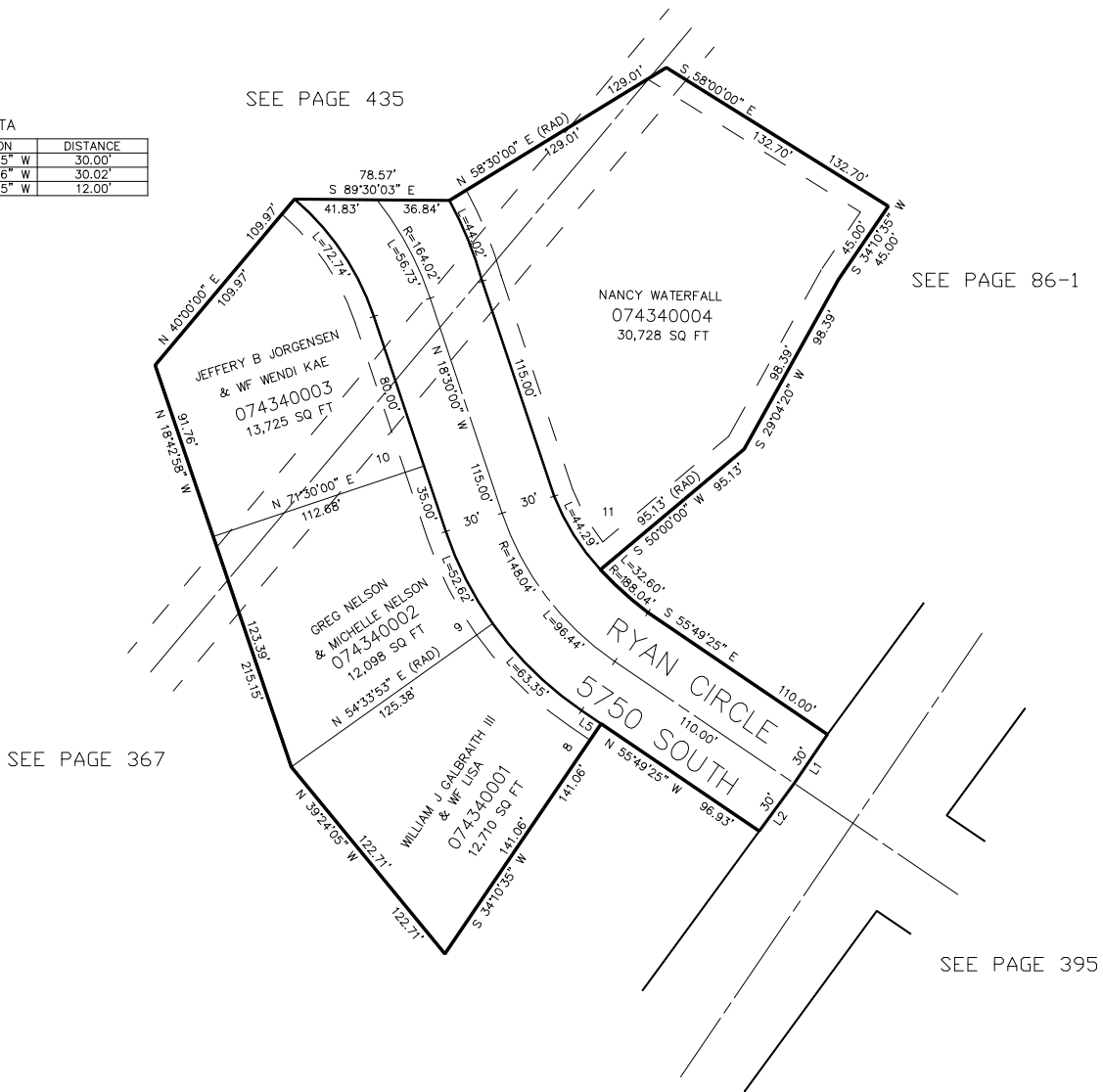
TAXING UNIT: 159

SCALE 1" = 50'

SEE PAGE 435

LINE DATA

LINE	DIRECTION	DISTANCE
L1	S 34°10'35" W	30.00'
L2	S 36°12'36" W	30.02'
L5	N 55°49'25" W	12.00'



FOR COMPLETE ENG DATA SEE
ORIGINAL DEDICATION PLAT IN
BOOK 36, PAGE 45 OF RECORDS.

FOR TAX PURPOSES ONLY